



NuStreams-2000i/600i

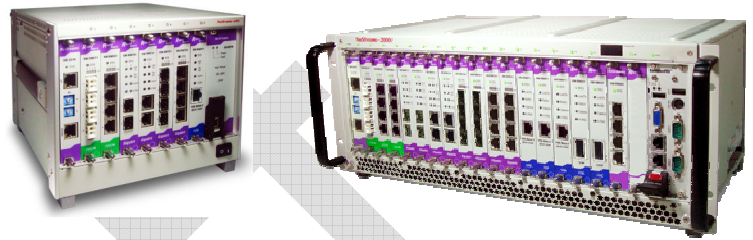
NuStreams-2000i/600i OVERVIEW

As ideal testbeds for researching and developing network product or quality control in mass-production scale, Xtramus NuStreams-2000i and NuStreams-600i chassis provide a flexible, reliable, and high-precision solution in network communication device testing.

NuStreams-2000i/600i provides various interfaces, such as 10G Ethernet, Gigabit Ethernet, 10/100 Mbps Ethernet for different testing requirements. Also, all slots of NuStreams-2000i/600i support hot-swapping. Therefore, swapping or changing test modules can be done easily without powering off NuStreams-2000i/600i.

To provide a safe and reliable testing environment, both NuStreams-2000i and NuStreams-600i have sensors embedded inside. Vital system information such as system temperature, rotation speed of the fans and system voltage can be picked up by these embedded sensors. This information can be read and interpreted by Xtramus utility software running on PCs, and the utility software will alarm users when system failures occur.

With XM-RM Series module cards installed, NuStreams-2000i and NuStreams-600i chassis can perform synchronized tests to ensure the test precision. As the result, the time consumed for all DUTs' multi-task testing will be shortened dramatically.



KEY FEATURES

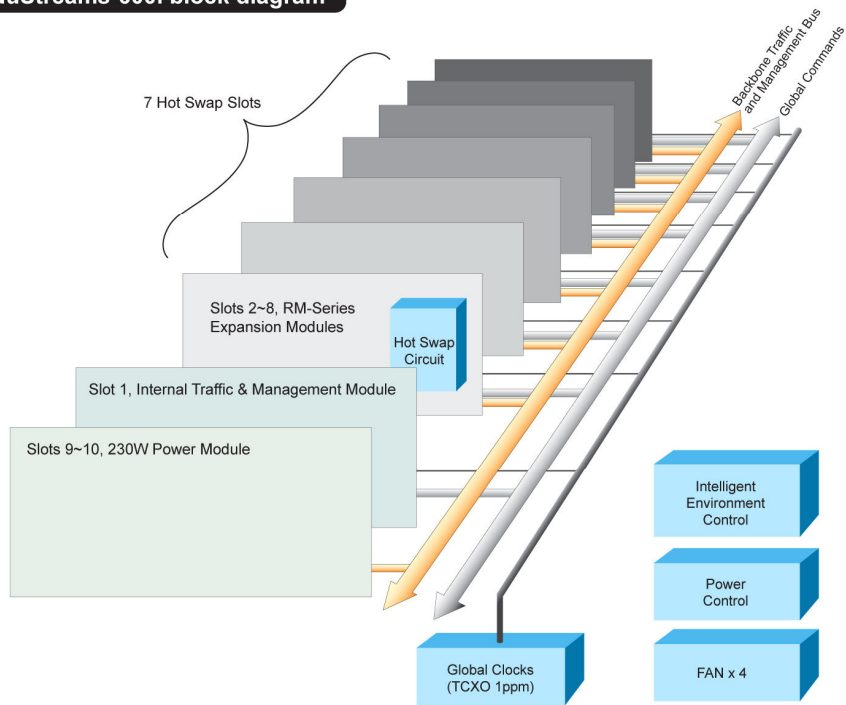
- Intuitive utility software for monitoring system temperature and the fan speed
- All slots support hot-swapping
- Performing synchronized tests between module cards
- Multi-user function for module cards that can provide greater hardware-efficiency
- Utility softwares provided by Xtramus Technologies which can analyze the test results and DUT performance with intuitive GUI interface.
- Module cards that work as management interfaces of NuStreams-2000i/600i are available and support different Ethernet transferring rate.
- Simple and easy-to-understand system status LEDs
- Replaceable fan tray
- Utility softwares that complied with RFC-2544 and RFC-2889.



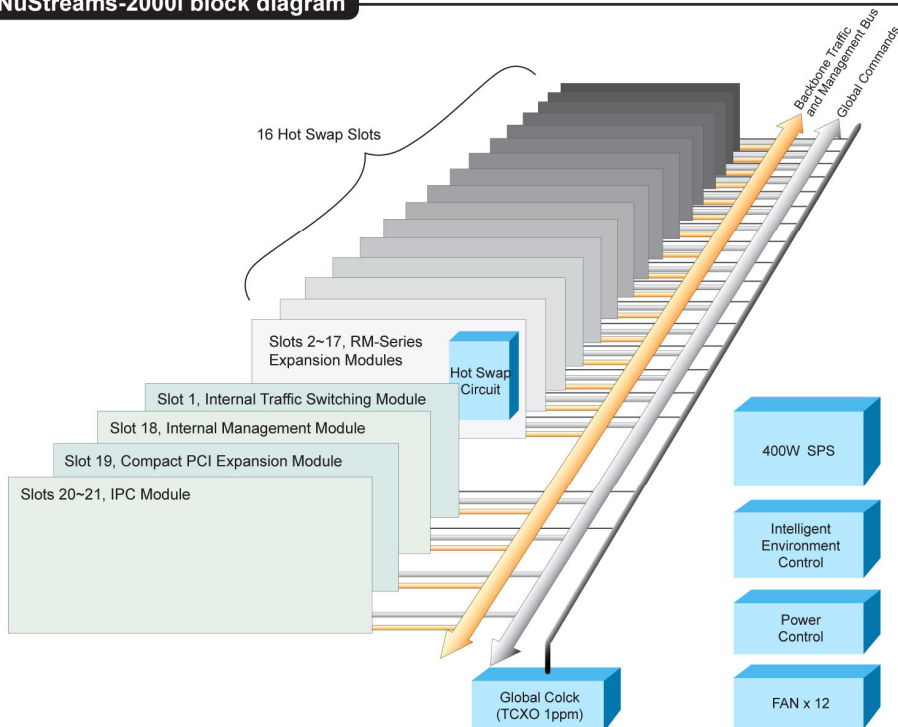
Main Applications

- Performance validation and analysis of DUT in mass production line
- Troubleshooting of DUT in the lab
- Production testing and quality assurance during manufacturing process of network products

NuStreams-600i block diagram



NuStreams-2000i block diagram





Specification

Model	NuStreams-600i		NuStreams-2000i	
Management Interface	XM-2S10 *	Ethernet: 10/100 Mbps UTP Port x 2	XM-2S19 *	Ethernet 10/100 Mbps UTP Port x 2
			XM-2S8G *	Ethernet 10/100/1000 Mbps UTP Port x 4
Slot	7 Slots for Installing Test Modules		16 Slots for Installing Test Modules	
Dimension	23.7cm X 22.0cm X 19.2cm		29.5cm X 48.5cm X 19.6cm	
Net Weight	Approx. 3.2kg		Approx. 12.1kg	
Power Jack	Male IEC 320 Receptacle			
Input Power	AC 90V ~ 240V, 50Hz ~ 60Hz			
Maximum Power Output	230 Watt		380 Watt	
Switch	Independent power switch for NuStreams-600i		Independent power switches for NuStreams-2000i and the IPC module	
Temperature	<ul style="list-style-type: none"> Operating: -10°C~ 50°C (14°F~ 122°F) 		<ul style="list-style-type: none"> Storage: -10°C~ 50°C (14°F~ 122°F) 	
Humidity	<ul style="list-style-type: none"> Operating: 0% ~ 85% RH 		<ul style="list-style-type: none"> Storage: 0% ~ 85% RH 	
LED	Module Status	Display the status of each installed module card		
	Fan Status	N/A	Display the status of fans	
Built-in Sensors	Detecting system temperatures, rotation speed of fans, and system voltage			

* XM-2S10, XM-2S19, and XM-2S8G module cards come with NuStreams-600i or NuStreams-2000i

* NuStreams-2000i and NuStreams-600i supports utility softwares such as NuWIN-RM, NuApps-Link, NuApps-2544-RM, APMP-4, NuCommander, and NuApps-2889-RM.

Optional IPC Module (XM-2113C) for NuStreams-2000i *			
Hardware		Interface	
CPU	Intel® Pentium® M 1.3GHz Processor	Keyboard/Mouse	PS/2 Connector X 1
Memory	512 MB of DDR2-553 RAM	Monitor	HD-DB15 VGA Port X 1
HDD	40 GB	Ethernet	RJ-45 Gigabit Ports X 1
* IPC is an optional module card (XM-2113C) supported by NuStreams-2000i and is sold separately.		2 RS-232 Serial Ports	
		2 USB 2.0 Ports	



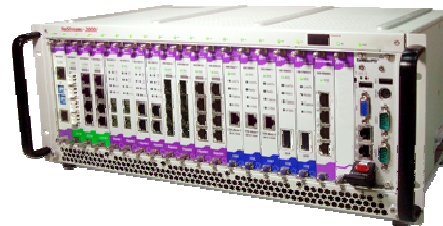
RELATED PRODUCTS

Module Name	Type	Description	Chassis Supported
XM-RM601	Professional	4 x 100 Mbps Rapid-Matrix SFP Ethernet Test Module	NuStreams-2000i/600i
XM-RM611	Professional	4 x 100 Mbps Rapid-Matrix POF Ethernet Test Module	NuStreams-2000i/600i
XM-RM621	Professional	4 x 10/100 Mbps Rapid-Matrix UTP Ethernet Test Module	NuStreams-2000i/600i
XM-RM731	Professional	2 Combo Gigabit SFP & 10/100/1000 Mbps UTP Rapid-Matrix Ethernet Test Module	NuStreams-2000i/600i
XM-RM735	Professional	1 Combo Gigabit SFP & 10/100/1000 Mbps UTP Rapid-Matrix Ethernet Test Module	NuStreams-2000i/600i
XM-RM811	Professional	1 x 10Gbps Rapid-Matrix SFP Ethernet Test Module	NuStreams-2000i/600i
XM-RM831	Professional	1 x 10Gbps Rapid-Matrix UTP Ethernet Test Module	NuStreams-2000i/600i
XM-RM661	Standard	4 x 100 Mbps Rapid-Matrix SFP Ethernet Test Module	NuStreams-2000i/600i
XM-RM671	Standard	4 x 100 Mbps Rapid-Matrix POF Ethernet Test Module	NuStreams-2000i/600i
XM-RM681	Standard	4 x 10/100 Mbps Rapid-Matrix UTP Ethernet Test Module	NuStreams-2000i/600i
XM-RM751	Standard	2 x Gigabit Rapid-Matrix SFP + 2 x 10/100/1000 Mbps Rapid-Matrix UTP Ethernet Test Module	NuStreams-2000i/600i
XM-RM761	Standard	4 x Gigabit Rapid-Matrix SFP Ethernet Test Module	NuStreams-2000i/600i
XM-RM781	Standard	4 x 10/100/1000 Mbps Rapid-Matrix UTP Ethernet Test Module	NuStreams-2000i/600i
XM-RM851	Standard	1 x 10Gbps Rapid-Matrix SFP Ethernet Test Module	NuStreams-2000i/600i
XM-RM871	Standard	1 x 10Gbps Rapid-Matrix UTP Ethernet Test Module	NuStreams-2000i/600i
XM-RM891	Standard	1 x 10Gbps Rapid-Matrix XFP Ethernet Test Module	NuStreams-2000i/600i

ORDER INFORMATION



NuStreams-600i



NuStreams-2000i

CONTACT INFORMATION

Website: <http://www.xtramus.com>

E-mail: Sales@xtramus.com (for Product Inquiry)

TS@xtramus.com (for Technical Support)

TEL: +886-2-8227-6611

FAX: +886-2-8227-6622